



Generation Forecasting Service

Provided by HyMet Inc. using the Flogen Model

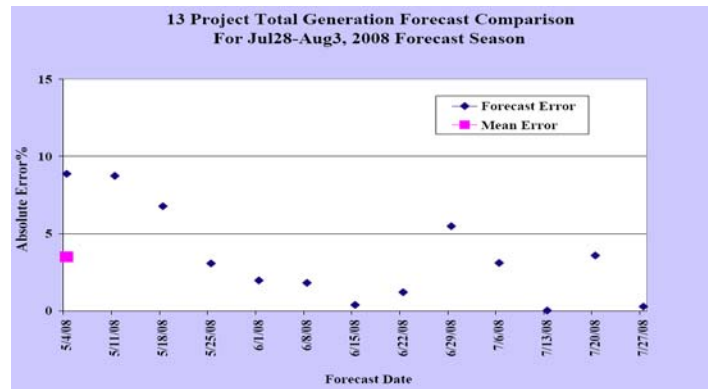
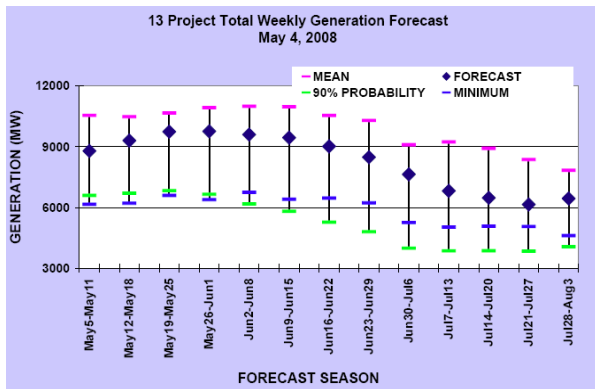
RELIABLE FORECASTS OF POWER GENERATED BY FEDERAL HYDRO PROJECTS

The thirteen federally owned and operated hydroelectric projects on the Columbia River produce an average of 8700 MW of energy annually. The energy production can vary greatly as the system operation responds to changing hydrology, non-Power requirements, electricity demands and energy market values.

Our Forecasting Service provides accurate, up-to-date projections of the hydroelectric energy from these projects in the days, weeks and months ahead.



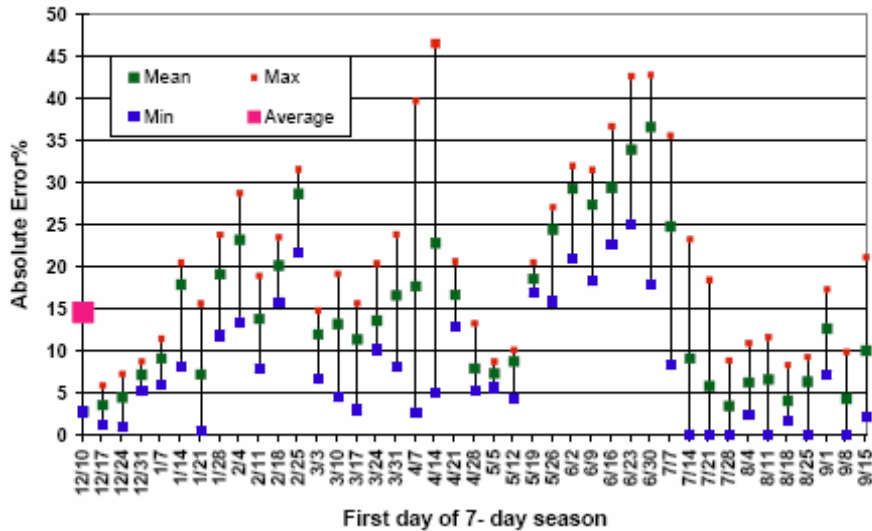
The massive Grand Coulee dam, whose controllable reservoir capability contributes to the uncertainty in regional hydro generation, can generate nearly 6,500 MW of power annually.



- WEEKLY AND MONTHLY-FORECASTS THROUGH THE END OF WATER YEAR
- STATISTICAL CONFIDENCE LIMITS, HISTORICAL ERROR RECORD
- R-SQUARED PROVIDED WITH EACH FORECAST
- FORECASTS AVAILABLE FOR 1 TO 300 DAYS IN ADVANCE WITHIN A WATER YEAR

ACCURACY: AVERAGE ABSOLUTE ERROR FOR ONE WEEK FORECAST DURING THE 2008 SEASON WAS 15%

2008 Water Year Generation Forecast Comparison of Weekly Forecasts



Phone: 206-463-1610

Fax: 206-463-2263

Email: hymet01@hotmail.com

birbal@hymet.com

www.hymet.com

HyMet Inc.

Mailing address:

19001 Vashon Hwy SW ,Suite# 201
Vashon, WA 98070